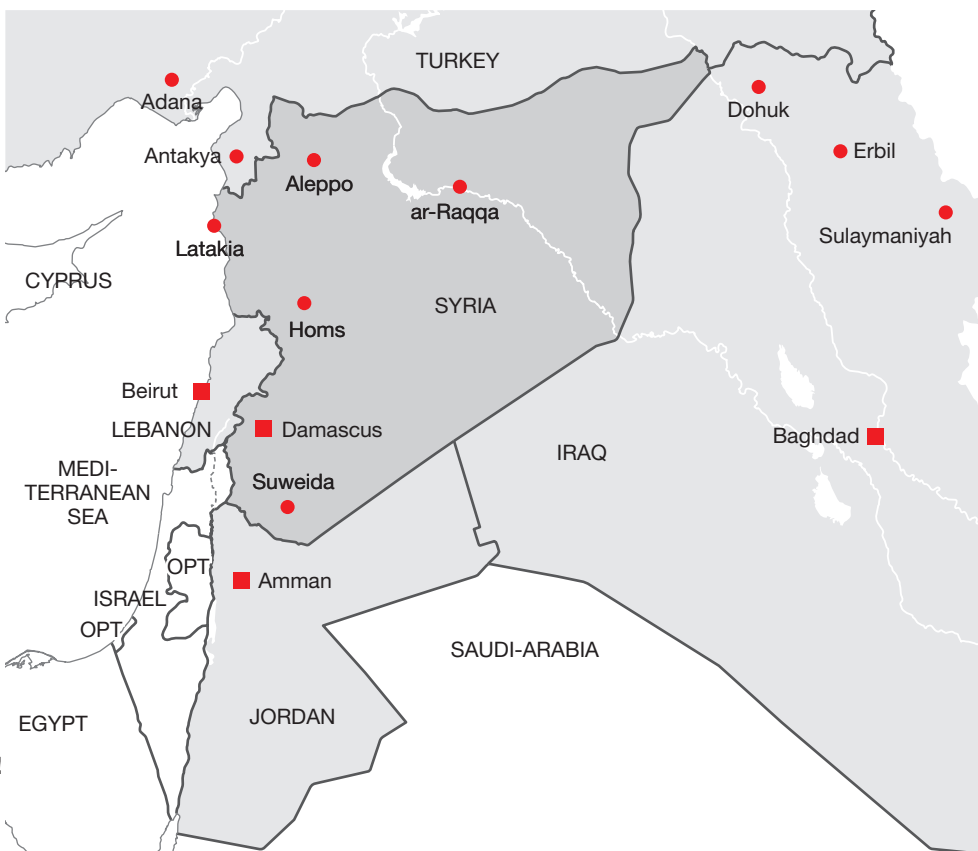


The conflict in Syria drags on endlessly. The number of people who fled the country has increased to **over 4 million**. Inside Syria, there are over **7.6 million** internally displaced persons trying to escape from the violence. While some refugees found accommodation in refugee camps or host families, the majority lives in emergency or provisional shelter, like tented settlements or vacant buildings.

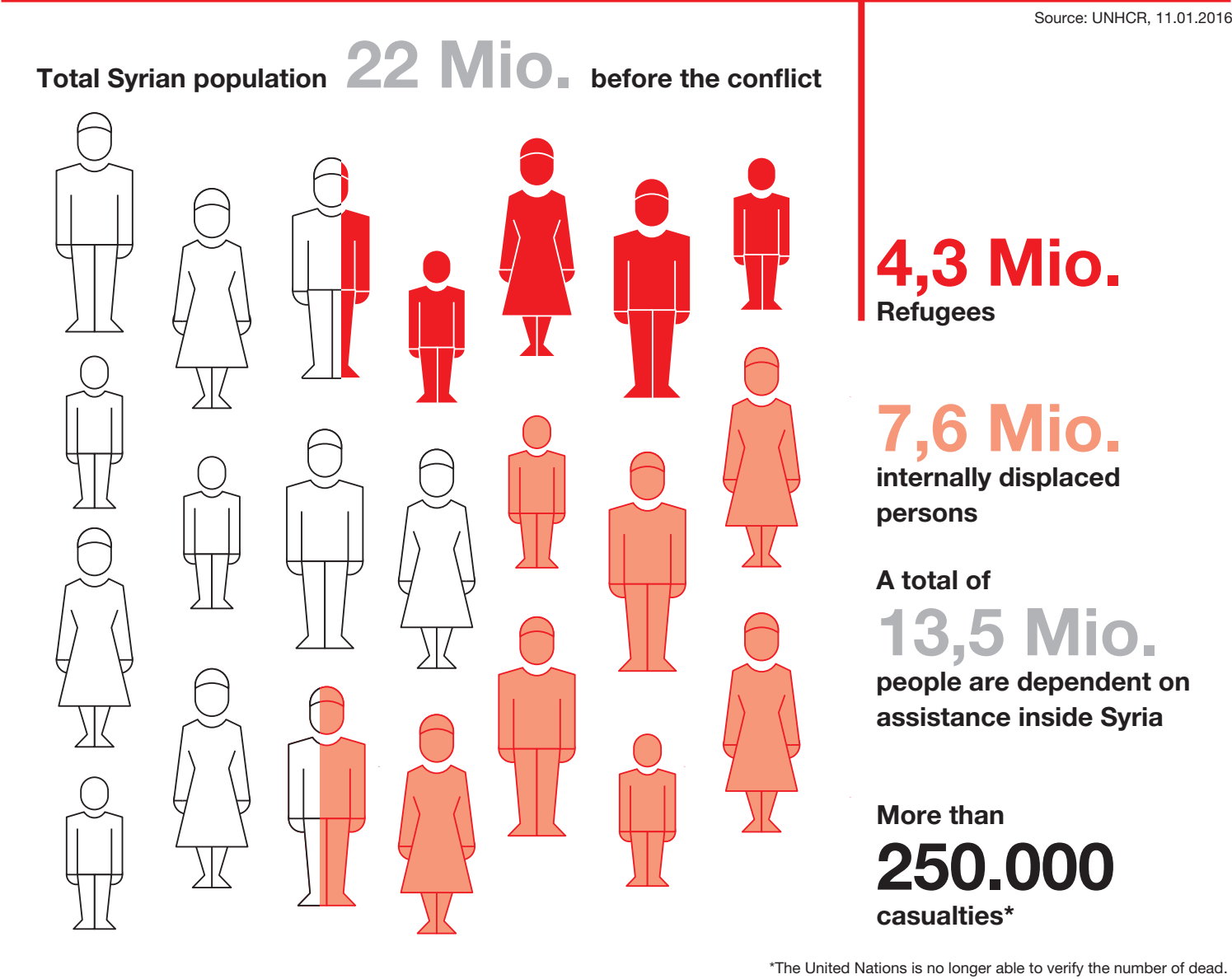
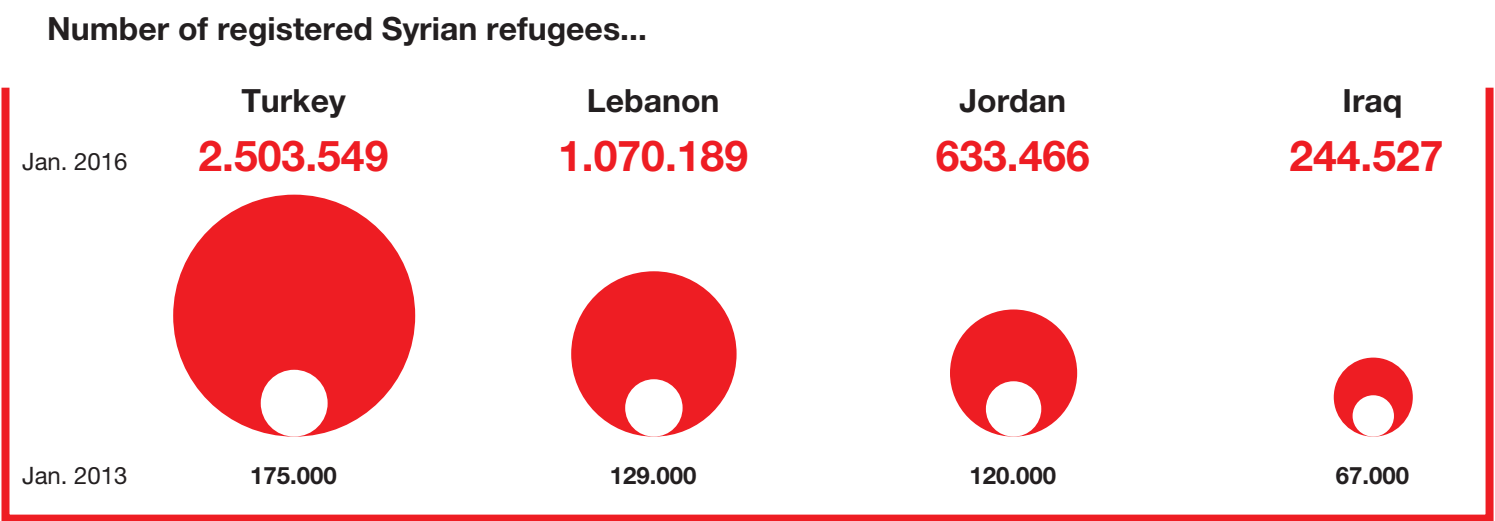
Since 2012 the German Red Cross (GRC) provides humanitarian assistance and is active in Syria, Lebanon, Jordan, Iraq and Turkey. In all those countries GRC cooperates closely with the National Red Cross or Red Crescent Society.

In addition GRC supports refugees in transit countries like Greece and Macedonia.

Please support our international cooperation!



## Current Situation



## Local partners

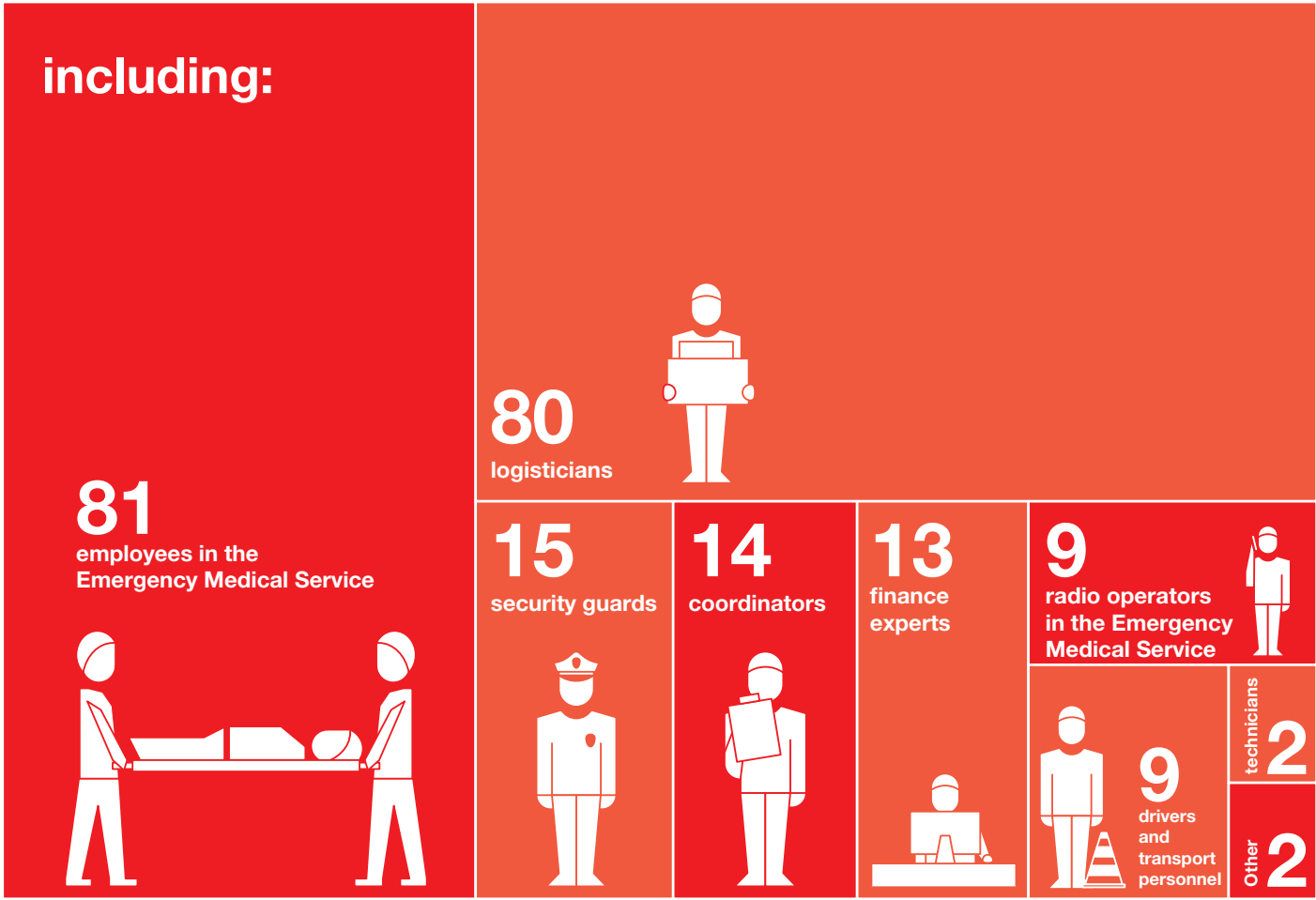
GRC supports the Red Cross and Red Crescent Societies in the affected countries in providing a variety of relief assistance

<b>Syria</b>  Syrian Arab Red Crescent	<b>Lebanon</b>  Lebanese Red Cross	<b>Turkey</b>  Turkish Red Crescent	<b>Jordan</b>  Jordan Red Crescent	<b>Iraq</b>  Iraqi Red Crescent
---	---	--	--	--

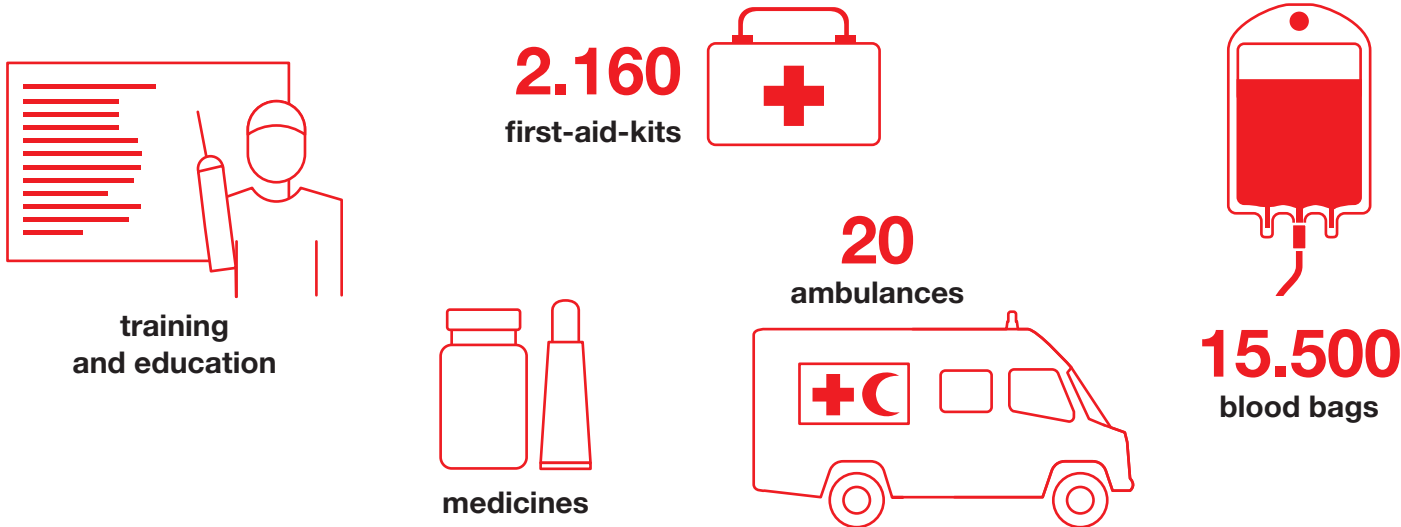
More than



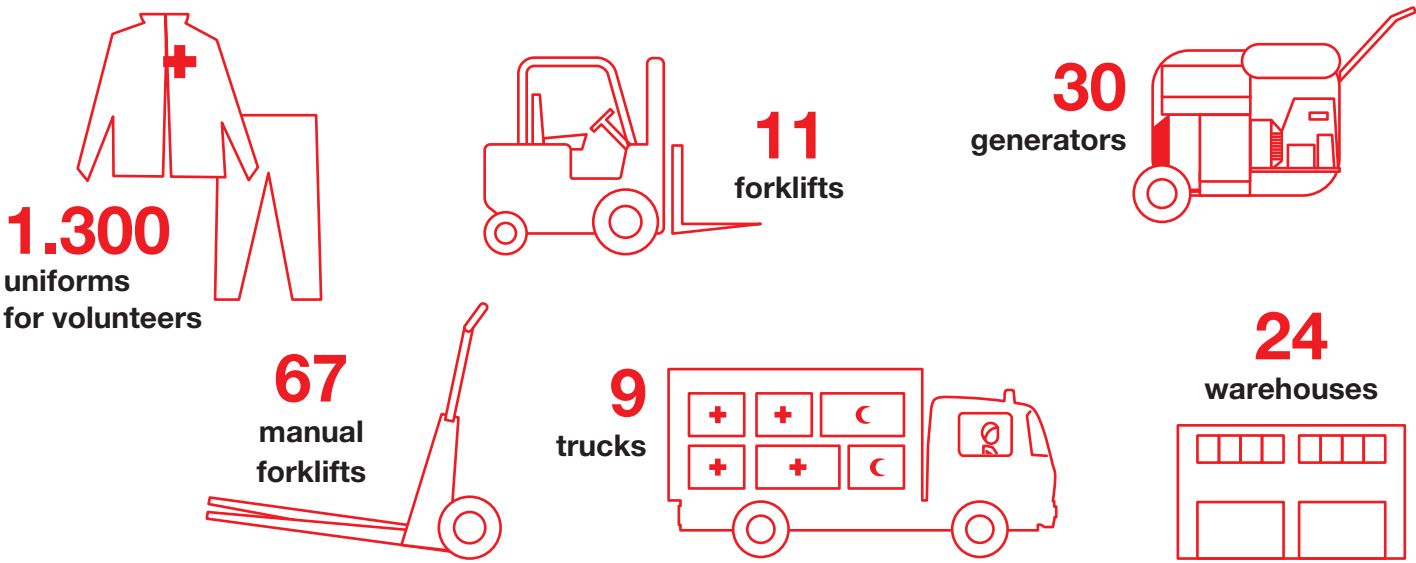
### Staff



### Medical assistance



### Humanitarian logistics



### Relief items and material

